



ab199084 – M-CSF Mouse SimpleStep ELISA[®] Kit

Instructions for Use

For the quantitative measurement of M-CSF in mouse serum, plasma (citrate), cell culture supernatants and cell extracts.

This product is for research use only and is not intended for diagnostic use.

Table of Contents

INTRODUCTION

1. BACKGROUND	2
2. ASSAY SUMMARY	3

GENERAL INFORMATION

3. PRECAUTIONS	4
4. STORAGE AND STABILITY	4
5. MATERIALS SUPPLIED	4
6. MATERIALS REQUIRED, NOT SUPPLIED	5
7. LIMITATIONS	5
8. TECHNICAL HINTS	5

ASSAY PREPARATION

9. REAGENT PREPARATION	7
10. STANDARD PREPARATION	9
11. SAMPLE PREPARATION	10
12. PLATE PREPARATION	12

ASSAY PROCEDURE

13. ASSAY PROCEDURE	13
---------------------	----

DATA ANALYSIS

14. CALCULATIONS	15
15. TYPICAL DATA	16
16. TYPICAL SAMPLE VALUES	18
17. ASSAY SPECIFICITY	21
18. SPECIES REACTIVITY	22

RESOURCES

19. TROUBLESHOOTING	23
20. NOTES	24

1. BACKGROUND

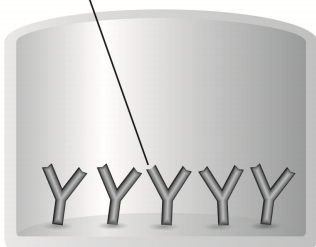
Abcam's M-CSF Mouse *in vitro* SimpleStep ELISA® (Enzyme-Linked Immunosorbent Assay) kit is designed for the quantitative measurement of M-CSF protein in mouse serum, plasma (citrate), cell culture supernatants and cell extracts.

The SimpleStep ELISA® employs an affinity tag labeled capture antibody and a reporter conjugated detector antibody which immunocapture the sample analyte in solution. This entire complex (capture antibody/analyte/detector antibody) is in turn immobilized via immunoaffinity of an anti-tag antibody coating the well. To perform the assay, samples or standards are added to the wells, followed by the antibody mix. After incubation, the wells are washed to remove unbound material. TMB substrate is added and during incubation is catalyzed by HRP, generating blue coloration. This reaction is then stopped by addition of Stop Solution completing any color change from blue to yellow. Signal is generated proportionally to the amount of bound analyte and the intensity is measured at 450 nm. Optionally, instead of the endpoint reading, development of TMB can be recorded kinetically at 600 nm.

M-CSF is a secreted cytokine that plays an essential role in the regulation of differentiation and maintenance of hematopoietic precursor cells, especially mononuclear phagocytes, such as macrophages and monocytes. It plays an important role in innate immunity and in inflammatory processes where it acts to promote the release of proinflammatory chemokines. M-CSF also plays an important role in the regulation of osteoclast proliferation and differentiation, the regulation of bone resorption, and is required for normal bone development. Reports show that it is required for normal male and female fertility. It also acts in reorganization of the actin cytoskeleton, regulates formation of membrane ruffles, cell adhesion and cell migration.

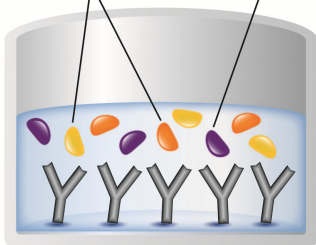
2. ASSAY SUMMARY

Immobilization Antibody



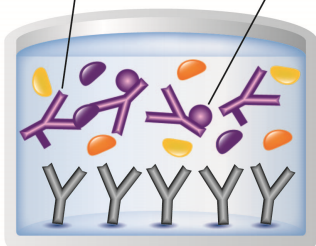
Remove appropriate number of antibody coated well strips. Equilibrate all reagents to room temperature. Prepare all reagents, samples, and standards as instructed.

Matrix Proteins Target Analyte



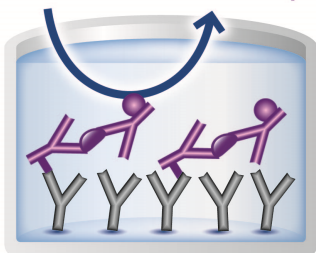
Add standard or sample to appropriate wells.

Capture Antibody Detector Antibody



Add Antibody Cocktail to all wells. Incubate at room temperature.

Substrate Color Development



Aspirate and wash each well. Add TMB Substrate to each well and incubate. Add Stop Solution at a defined endpoint. Alternatively, record color development kinetically after TMB substrate addition.

3. PRECAUTIONS

Please read these instructions carefully prior to beginning the assay.

All kit components have been formulated and quality control tested to function successfully as a kit. Modifications to the kit components or procedures may result in loss of performance.

4. STORAGE AND STABILITY

Store kit at 2-8°C immediately upon receipt.

Refer to list of materials supplied for storage conditions of individual components. Observe the storage conditions for individual prepared components in the Reagent and Standard Preparation sections.

5. MATERIALS SUPPLIED

Item	Amount	Storage Condition (Before Preparation)
Mouse M-CSF Capture Antibody (lyophilized)	2 Vial	+2-8°C
10X Mouse M-CSF Detector Antibody	600 µL	+2-8°C
Mouse M-CSF Lyophilized Recombinant Protein	2 Vials	+2-8°C
Antibody Diluent 4BI	6 mL	+2-8°C
10X Wash Buffer PT	20 mL	+2-8°C
5X Cell Extraction Buffer PTR	10 mL	+2-8°C
50X Cell Extraction Enhancer Solution	1 mL	+2-8°C
TMB Substrate	12 mL	+2-8°C
Stop Solution	12 mL	+2-8°C
Sample Diluent NS	50 mL	+2-8°C
Pre-Coated 96 Well Microplate (12 x 8 well strips)	96 Wells	+2-8°C
Plate Seal	1	+2-8°C

6. MATERIALS REQUIRED, NOT SUPPLIED

These materials are not included in the kit, but will be required to successfully utilize this assay:

- Microplate reader capable of measuring absorbance at 450 or 600 nm.
- Method for determining protein concentration (BCA assay recommended).
- Deionized water.
- PBS (1.4 mM KH_2PO_4 , 8 mM Na_2HPO_4 , 140 mM NaCl, 2.7 mM KCl, pH 7.4).
- Multi- and single-channel pipettes.
- Tubes for standard dilution.
- Plate shaker for all incubation steps.
- Phenylmethylsulfonyl Fluoride (PMSF) (or other protease inhibitors).

7. LIMITATIONS

- Assay kit intended for research use only. Not for use in diagnostic procedures.
- Do not mix or substitute reagents or materials from other kit lots or vendors. Kits are QC tested as a set of components and performance cannot be guaranteed if utilized separately or substituted.

8. TECHNICAL HINTS

- Samples generating values higher than the highest standard should be further diluted in the appropriate sample dilution buffers.
- Avoid foaming or bubbles when mixing or reconstituting components.
- Avoid cross contamination of samples or reagents by changing tips between sample, standard and reagent additions.

GENERAL INFORMATION

- Ensure plates are properly sealed or covered during incubation steps.
- Complete removal of all solutions and buffers during wash steps is necessary to minimize background.
- As a guide, typical ranges of sample concentration for commonly used sample types are shown below in Sample Preparation (section 11).
- All samples should be mixed thoroughly and gently.
- Avoid multiple freeze/thaw of samples.
- Incubate ELISA plates on a plate shaker during all incubation steps.
- When generating positive control samples, it is advisable to change pipette tips after each step.
- The provided 50X Cell Extraction Enhancer Solution may precipitate when stored at +4°C. To dissolve, warm briefly at +37°C and mix gently. The 50X Cell Extraction Enhancer Solution can be stored at room temperature to avoid precipitation.
- **To avoid high background always add samples or standards to the well before the addition of the antibody cocktail.**
- **This kit is sold based on number of tests. A ‘test’ simply refers to a single assay well. The number of wells that contain sample, control or standard will vary by product. Review the protocol completely to confirm this kit meets your requirements. Please contact our Technical Support staff with any questions.**

9. REAGENT PREPARATION

- Equilibrate all reagents to room temperature (18-25°C) prior to use. The kit contains enough reagents for 96 wells. **The sample volumes below are sufficient for 48 wells (6 x 8-well strips); adjust volumes as needed for the number of strips in your experiment.**
- Prepare only as much reagent as is needed on the day of the experiment. Capture and Detector Antibodies have only been tested for stability in the provided 10X formulations.

9.1 1X Cell Extraction Buffer PTR (For cell and tissue extracts only)

Prepare 1X Cell Extraction Buffer PTR by diluting 5X Cell Extraction Buffer PTR and 50X Cell Extraction Enhancer Solution to 1X with deionized water. To make 10 mL 1X Cell Extraction Buffer PTR combine 7.8 mL deionized water, 2 mL 5X Cell Extraction Buffer PTR and 200 μ L 50X Cell Extraction Enhancer Solution. Mix thoroughly and gently. If required protease inhibitors can be added.

Alternative – Enhancer may be added to 1X Cell Extraction Buffer PTR after extraction of cells or tissue. Refer to note in the Troubleshooting section.

9.2 1X Wash Buffer PT

Prepare 1X Wash Buffer PT by diluting 10X Wash Buffer PT with deionized water. To make 50 mL 1X Wash Buffer PT combine 5 mL 10X Wash Buffer PT with 45 mL deionized water. Mix thoroughly and gently.

9.1 10X Capture Antibody

To reconstitute the lyophilized capture antibody, centrifuge the lyophilized capture at 10,000 g for 2 minutes. Add 660 μ L of Sample Diluent NS, let sit at room temperature for 10 minutes and resuspend well by inverting the tube by hand and gently pipetting.

Unused antibody can be stored frozen at -20°C . Avoid repeated freeze-thaw cycles.

9.2 **Antibody Cocktail**

Prepare Antibody Cocktail by diluting the capture and detector antibodies in Antibody Diluent 4BI. To make 3 mL of the Antibody Cocktail combine 300 μL 10X Capture Antibody and 300 μL 10X Detector Antibody with 2.4 mL Antibody Diluent 4BI. Mix thoroughly and gently.

10. STANDARD PREPARATION

Prepare serially diluted standards immediately prior to use. Always prepare a fresh set of positive controls for every use.

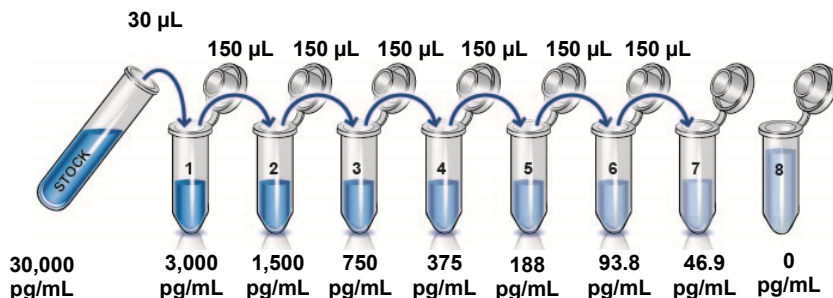
The following table describes the preparation of a standard curve for duplicate measurements (recommended).

- 10.1 **IMPORTANT:** If the protein standard vial has a volume identified on the label, reconstitute the M-CSF standard by adding that volume of Diluent indicated on the label. Alternatively, if the vial has a mass identified, reconstitute the M-CSF standard by adding 500 μL Diluent. Hold at room temperature for 10 minutes and mix gently. This is the 30,000 pg/mL **Stock Standard** Solution.

For **serum, plasma and cell culture supernatant samples**, reconstitute the M-CSF standard by adding Sample Diluent NS by pipette.

For **cell extract samples**, reconstitute the M-CSF standard by adding 1X Cell Extraction Buffer PTR by pipette.

- 10.2 Label eight tubes, Standards 1– 8.
- 10.3 Add 270 μL of appropriate diluent (see Step 10.1) into tube number 1 and 150 μL of appropriate diluent into numbers 2-8.
- 10.4 Use the Stock Standard to prepare the following dilution series. Standard #8 contains no protein and is the Blank control:



11. SAMPLE PREPARATION

TYPICAL SAMPLE DYNAMIC RANGE	
Sample Type	Range
Mouse Serum	0.781 - 6.25%
Mouse Plasma - Citrate	3.13 - 50.0%
L929 Stimulated Cell Culture Supernatant	1.56 - 12.5%
L929 Unstimulated Cell Culture Supernatant	1.56 - 12.5%
L929 Stimulated Cell Extracts	31.25 – 500 µg/mL

11.1 Plasma

Collect plasma using citrate. Centrifuge samples at 2,000 x g for 10 minutes. Dilute samples into Sample Diluent NS and assay. Store un-diluted plasma samples at -20°C or below for up to 3 months. Avoid repeated freeze-thaw cycles.

11.2 Serum

Samples should be collected into a serum separator tube. After clot formation, centrifuge samples at 2,000 x g for 10 minutes and collect serum. Dilute samples into Sample Diluent NS and assay. Store un-diluted serum at -20°C or below. Avoid repeated freeze-thaw cycles.

11.3 Cell Culture Supernatants

Centrifuge cell culture media at 2,000 x g for 10 minutes to remove debris. Collect supernatants and assay. Store samples at -20°C or below. Avoid repeated freeze-thaw cycles.

11.4 Preparation of extracts from cell pellets

11.4.1 Collect non-adherent cells by centrifugation or scrape to collect adherent cells from the culture

flask. Typical centrifugation conditions for cells are 500 x g for 5 minutes at 4°C.

- 11.4.2 Rinse cells twice with PBS.
 - 11.4.3 Solubilize pellet at 2×10^7 cell/mL in chilled 1X Cell Extraction Buffer PTR.
 - 11.4.4 Incubate on ice for 20 minutes.
 - 11.4.5 Centrifuge at 18,000 x g for 20 minutes at 4°C.
 - 11.4.6 Transfer the supernatants into clean tubes and discard the pellets.
 - 11.4.7 Assay samples immediately or aliquot and store at -80°C. The sample protein concentration in the extract may be quantified using a protein assay.
 - 11.4.8 Dilute samples to desired concentration in 1X Cell Extraction Buffer PTR.
- 11.5 Preparation of extracts from adherent cells by direct lysis (alternative protocol)**
- 11.5.1 Remove growth media and rinse adherent cells 2 times in PBS.
 - 11.5.2 Solubilize the cells by addition of chilled 1X Cell Extraction Buffer PTR directly to the plate (use 750 μ L - 1.5 mL 1X Cell Extraction Buffer PTR per confluent 15 cm diameter plate).
 - 11.5.3 Scrape the cells into a microfuge tube and incubate the lysate on ice for 15 minutes.
 - 11.5.4 Centrifuge at 18,000 x g for 20 minutes at 4°C.
 - 11.5.5 Transfer the supernatants into clean tubes and discard the pellets.
 - 11.5.6 Assay samples immediately or aliquot and store at -80°C. The sample protein concentration in the extract may be quantified using a protein assay.
 - 11.5.7 Dilute samples to desired concentration in 1X Cell Extraction Buffer PTR.

12. PLATE PREPARATION

- The 96 well plate strips included with this kit are supplied ready to use. It is not necessary to rinse the plate prior to adding reagents.
- Unused plate strips should be immediately returned to the foil pouch containing the desiccant pack, resealed and stored at 4°C.
- For each assay performed, a minimum of two wells must be used as the zero control.
- For statistical reasons, we recommend each sample should be assayed with a minimum of two replicates (duplicates).
- Differences in well absorbance or “edge effects” have not been observed with this assay.

13. ASSAY PROCEDURE

- **Equilibrate all materials and prepared reagents to room temperature prior to use.**
- **It is recommended to assay all standards, controls and samples in duplicate.**
 - 13.1 Prepare all reagents, working standards, and samples as directed in the previous sections.
 - 13.2 Remove excess microplate strips from the plate frame, return them to the foil pouch containing the desiccant pack, reseal and return to 4°C storage.
 - 13.3 Add 50 µL of all sample or standard to appropriate wells.
 - 13.4 Add 50 µL of the Antibody Cocktail to each well.
 - 13.5 Seal the plate and incubate for 1 hour at room temperature on a plate shaker set to 400 rpm.
 - 13.6 Wash each well with 3 x 350 µL 1X Wash Buffer PT. Wash by aspirating or decanting from wells then dispensing 350 µL 1X Wash Buffer PT into each well. Complete removal of liquid at each step is essential for good performance. After the last wash invert the plate and blot it against clean paper towels to remove excess liquid.
 - 13.7 Add 100 µL of TMB Development Solution to each well and incubate for 10 minutes in the dark on a plate shaker set to 400 rpm.

Given variability in laboratory environmental conditions, optimal incubation time may vary between 5 and 20 minutes.
Note: The addition of Stop Solution will change the color from blue to yellow and enhance the signal intensity about 3X. To avoid signal saturation, proceed to the next step before the high concentration of the standard reaches a blue color of O.D.600 equal to 1.0.
 - 13.8 Add 100 µL of Stop Solution to each well. Shake plate on a plate shaker for 1 minute to mix. Record the OD at 450 nm. This is an endpoint reading.

ASSAY PROCEDURE

Alternative to 13.7 – 13.8: Instead of the endpoint reading at 450 nm, record the development of TMB Substrate kinetically. Immediately after addition of TMB Development Solution begin recording the blue color development with elapsed time in the microplate reader prepared with the following settings:

Mode:	Kinetic
Wavelength:	600 nm
Time:	up to 20 min
Interval:	20 sec - 1 min
Shaking:	Shake between readings

Note that an endpoint reading can also be recorded at the completion of the kinetic read by adding 100 μ L Stop Solution to each well and recording the OD at 450 nm.

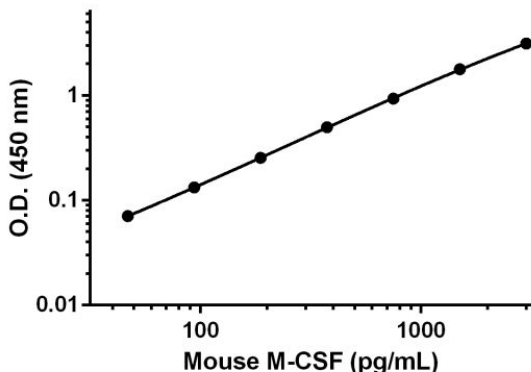
13.9 Analyze the data as described below.

14. CALCULATIONS

Subtract average zero standard from all readings. Average the duplicate readings of the positive control dilutions and plot against their concentrations. Draw the best smooth curve through these points to construct a standard curve. Most plate reader software or graphing software can plot these values and curve fit. A four parameter algorithm (4PL) usually provides the best fit, though other equations can be examined to see which provides the most accurate (e.g. linear, semi-log, log/log, 4 parameter logistic). Interpolate protein concentrations for unknown samples from the standard curve plotted. Samples producing signals greater than that of the highest standard should be further diluted and reanalyzed, then multiplying the concentration found by the appropriate dilution factor.

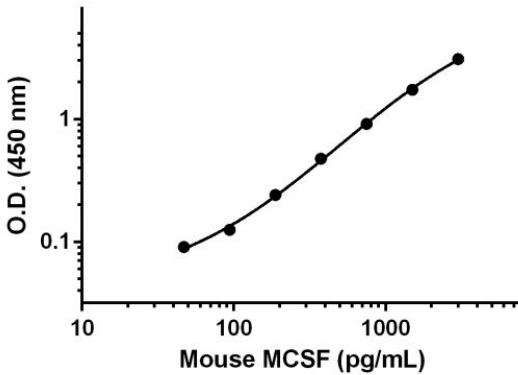
15. TYPICAL DATA

TYPICAL STANDARD CURVE – Data provided for **demonstration purposes only**. A new standard curve must be generated for each assay performed.



Standard Curve Measurements			
Conc. (pg/mL)	O.D. 450 nm		Mean O.D.
	1	2	
0	0.054	0.056	0.055
46.9	0.128	0.123	0.126
93.8	0.189	0.188	0.188
188	0.307	0.312	0.309
375	0.547	0.558	0.552
750	0.982	0.994	0.988
1,500	1.804	1.863	1.834
3,000	3.141	3.214	3.177

Figure 1. Example of M-CSF standard curve in Sample Diluent NS. The M-CSF standard curve was prepared as described in Section 10. Raw data values are shown in the table. Background-subtracted data values (mean +/- SD) are graphed.



Standard Curve Measurements			
Conc. (pg/mL)	O.D. 450 nm		Mean O.D.
	1	2	
0	0.051	0.050	0.050
46.9	0.128	0.122	0.125
93.8	0.203	0.189	0.196
188	0.328	0.316	0.322
375	0.580	0.559	0.569
750	1.049	1.024	1.036
1,500	1.899	1.851	1.875
3,000	3.217	3.191	3.204

Figure 2. Example of M-CSF standard curve in 1X Cell Extraction Buffer PTR. The M-CSF standard curve was prepared as described in Section 10. Raw data values are shown in the table. Background-subtracted data values (mean +/- SD) are graphed.

16. TYPICAL SAMPLE VALUES

SENSITIVITY –

The calculated minimal detectable dose (MDD) is determined by calculating the mean of zero standard replicates and adding 2 standard deviations then extrapolating the corresponding concentrations. The MDD is dependent on the Sample Diluent buffer used:

Sample Diluent Buffer	n=	Minimal Detectable Dose
Sample Diluent NS	26	7.2 pg/mL
1X Cell Extraction Buffer PTR	26	3.7 pg/mL

RECOVERY –

Three concentrations of M-CSF recombinant protein were spiked in duplicate to the indicated biological matrix to evaluate signal recovery in the working range of the assay.

Sample Type	Average % Recovery	Range (%)
6.25% Mouse Serum	97	92 - 105
6.25% Mouse Plasma - Citrate	110	107 - 112
25% Cell Culture Media (MEM+10% Horse Serum)	86	83 - 90

LINEARITY OF DILUTION –

Linearity of dilution is determined based on interpolated values from the standard curve. Linearity of dilution defines a sample concentration interval in which interpolated target concentrations are directly proportional to sample dilution.

Native M-CSF was measured in the following biological samples in a 2-fold dilution series. Sample dilutions are made in Sample Diluent NS.

Dilution Factor	Interpolated value	6.25% Mouse Serum	50% Mouse Plasma (Citrate)	12.5% Stimulated L929 Cell Supernatant	25% Unstimulated L929 Cell Supernatant	500 µg/mL Stimulated L929 Extracts
Undiluted	pg/mL	208.7	1,024.6	315.2	202.6	636.4
	% Expected value	100	100	100	100	100
2	pg/mL	98.7	632.4	170.5	114.5	340.7
	% Expected value	95	123	108	113	107
4	pg/mL	40.2	311.5	89.0	62.0	167.4
	% Expected value	77	122	113	122	105
8	pg/mL	21.7	151.1	44.4	30.1	90.3
	% Expected value	83	118	113	119	114
16	pg/mL	NL	70.0	NL	12.4	36.2
	% Expected value	NL	109	NL	98	91

NL – Non-Linear

PRECISION –

Mean coefficient of variations of interpolated values from 3 concentrations of mouse plasma (citrate) within the working range of the assay.

	Intra-Assay	Inter-Assay
n=	8	3
CV (%)	4.35	6.28

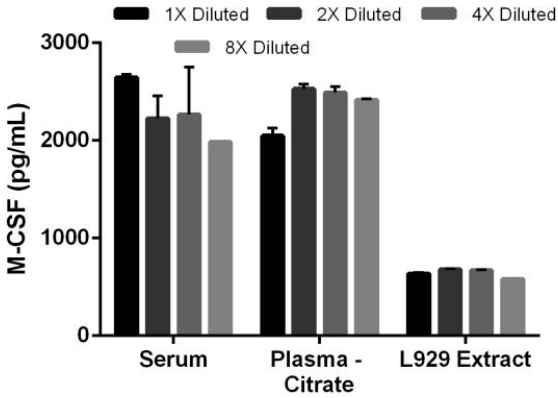


Figure 3. Linearity of dilution of the assay. Titration of mouse serum, plasma (citrate) and stimulated L929 cell extracts. The 1X dilution for mouse serum was 6.25% matrix, and the 1X dilution for plasma was 50.0% matrix. The 1X dilution for the L929 extract was 500 μ g/mL. The interpolated M-CSF concentrations multiplied by the total dilution factor are shown for each matrix (mean \pm SD, n = 2).

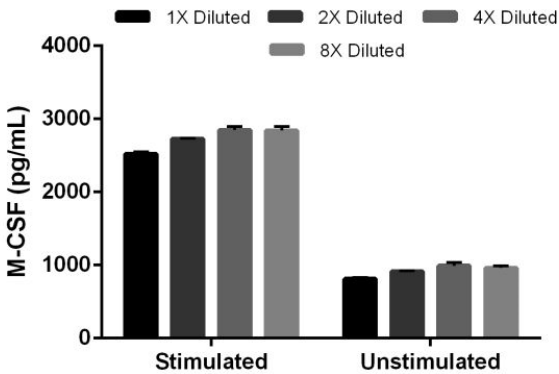


Figure 4. Titration of Stimulated L929 supernatant and Unstimulated L929 supernatant within the working range of the assay. The 1X dilution for stimulated L929 supernatant was 12.5% matrix, and the 1X dilution for unstimulated L929 supernatant was 25.0% matrix. The interpolated M-CSF concentrations multiplied by the total dilution factor are shown for each matrix (mean \pm SD, n = 2).

17. ASSAY SPECIFICITY

This kit recognizes both native and recombinant mouse M-CSF protein in serum, plasma (citrate), cell culture media and cell extract samples only.

CROSS REACTIVITY

Mouse G-CSF were prepared at 3,000 pg/mL in Sample Diluent NS and assayed for cross reactivity in this assay. No cross reactivity was observed.

18. SPECIES REACTIVITY

This kit recognizes mouse M-CSF protein.

Other species reactivity was determined by measuring 6.25% (1:16) serum samples of various species, interpolating the protein concentrations from the mouse standard curve, and expressing the interpolated concentrations as a percentage of the protein concentration in mouse serum assayed at the same dilution.

Reactivity < 3% was determined for the following species:

Human

Rat

Hamster

Rabbit

Goat

Cow

Please contact our Technical Support team for more information.

19. TROUBLESHOOTING

Problem	Cause	Solution
Difficulty pipetting lysate; viscous lysate.	Genomic DNA solubilized	Prepare 1X Cell Extraction Buffer PTR (without enhancer). Add enhancer to lysate after extraction.
Poor standard curve	Inaccurate Pipetting	Check pipettes
	Improper standard dilution	Prior to opening, briefly spin the stock standard tube and dissolve the powder thoroughly by gentle mixing
Low Signal	Incubation times too brief	Ensure sufficient incubation times; increase to 2 or 3 hour standard/sample incubation
	Inadequate reagent volumes or improper dilution	Check pipettes and ensure correct preparation
	Incubation times with TMB too brief	Ensure sufficient incubation time until blue color develops prior addition of Stop solution
Large CV	Plate is insufficiently washed	Review manual for proper wash technique. If using a plate washer, check all ports for obstructions.
	Contaminated wash buffer	Prepare fresh wash buffer
Low sensitivity	Improper storage of the ELISA kit	Store your reconstituted standards at -80°C , all other assay components 4°C . Keep TMB substrate solution protected from light.

20. NOTES

Technical Support

Copyright © 2023 Abcam, All Rights Reserved. The Abcam logo is a registered trademark. All information / detail is correct at time of going to print.

For all technical or commercial enquiries please go to:

www.abcam.com/contactus

www.abcam.cn/contactus (China)

www.abcam.co.jp/contactus (Japan)